

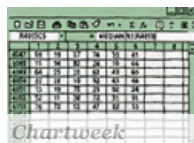
Download a **free audiobook** today

audible
an amazon company

LEARN MORE

BETABEAT POLITICKER GALLERISTNY COMMERCIAL VSL POLITICKERNJ

SEARCH CO

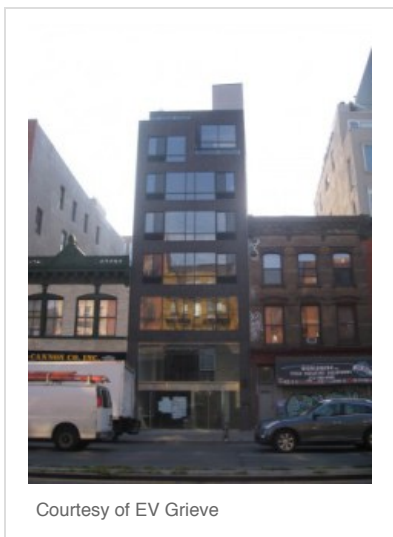


Lease Beat

Garis & Hahn Set to Open Gallery on Bowery

By Michael Ewing 1/25 1:30am

Twitter 1 Facebook 12 LinkedIn Google +1 Email Print



Garis & Hahn have inked its first art gallery location on the Lower East Side.

The gallery that “mounts exhibitions focused on conceptual narratives and relevant conversations in contemporary art” will take a 2,422-square-foot space at **263 Bowery**, between Stanton Street and East Houston Street. The gallery will consist of approximately 1,800 square feet on the ground floor and a 600 square foot lower level.

“[Mary and Sophie] were attracted to the Lower East Side/Bowery neighborhood as an alternative to Chelsea,” said **Lee Block**, a director of **Winick Realty Group**. “It is edgier and more vibrant and the art scene is growing with major galleries within a few blocks and The New Museum one block to the south.”

“The neighborhood as a whole is growing as well,” he added. “The area on Bowery south of Houston Street is hot now, with new retailers opening such as Anthropologie across the street from their gallery and multiple residential and hotel developments in the area.”

Mr. Block exclusively represented Garis & Hahn in the transaction. **CBRE** was on the opposite side of the table representing the landlord, **D.N.P. 336 Convent Avenue LLC**.

Garis & Hahn will host their inaugural exhibit, *After The Fall*, until February 16th. The exhibit showcases the work of seven photographers. The photographers are “exploring innovative

Follow Like 534

Lease Beat

Adult Daycare Center Takes 7,000 Square Feet in Harlem

Download a **free audiobook** today

audible
an amazon company


LEARN MORE

permutations of the staged, the candid and the constructed," a representative for the gallery noted in a statement.

★ Like

Be the first to like this.

Follow Michael Ewing [via RSS](#).



Post to Facebook
Posting as Sophie Hahn ([Change](#))

Facebook social plugin

Enter your email for updates

-
-
-
-
-
-

See also

L.E.S. Report: Application for 2,300 S.F. of Commercial Space on Orchard St., Intermix To Hit Bowery

Retail Run on Bowery

Martin Scorsese Implores Amanda Burden To Revise Bowery Zoning

Gallery Systems Heading Downtown to 5 Hanover Square

The Street Where You Live: The Bowery, Scrubbed

topics: [263 bowery](#), [After the Fall](#), [CBRE](#), [DNP 336 Convent Avenue](#), [Garis & Hahn](#), [Lease Beat](#), [Lee Block](#), [Winick Realty Group](#)

Send an anonymous tip

The Return of the Mega Deal

Tiger Management Renews at 101 Park Avenue

SAP Snags Additional 31,000 SF at Hudson Yards

Mom and Pop Supermarket Coming to Mercedes House

RFR and Kushner Companies to Acquire Watchtower Dumbo Properties



Josh Siegelman
The Signature Gets the Worm